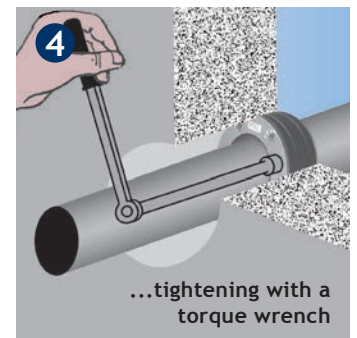
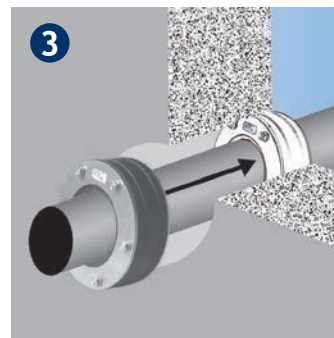
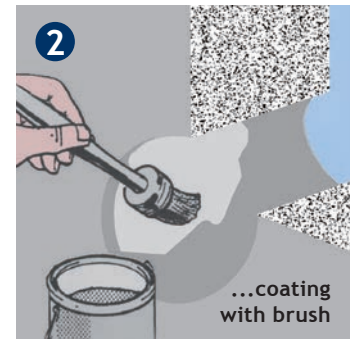


MONTAGEANLEITUNG

1. Clean the casing pipe/core drilling and carrier pipe. Carrier pipe must be suitable, dimensionally stable and without damage in the sealing area. Core drillings have to be made true to scale and with a smooth inner side. There must not be blowholes, cracks or other unevenness on/in the inner surface of the core drilling.
2. We recommend coating core drill holes with ProteX epoxy resin in order to protect the concrete and smooth possible cavities/grooves. When used for potable water systems (drinking water), a core drill coating approved for this application must be used on site.
3. Verify the casing pipe/core drilling and carrier pipe diameters based on the sealing kit data. Before installation, check the Kompakt SpeX Seal for possible damages and soiling. Only undamaged seals may be used.
4. Insert the Kompakt SpeX Seal into the casing pipe or core drilling flush with the wall and insert the carrier pipe. Care must be taken to ensure the sealing insert is mounted on the outside of the building. In doing so, the nuts should preferably point to the inside in order to be accessible for subsequent tightening (Fig. 5). The Kompakt SpeX Seal split version is available for subsequent installation. Tighten the nuts crosswise in steps of 1-2 turns (Fig. 6). Repeat the process until the maximum torque is reached (see table below). Tighten again after half an hour.

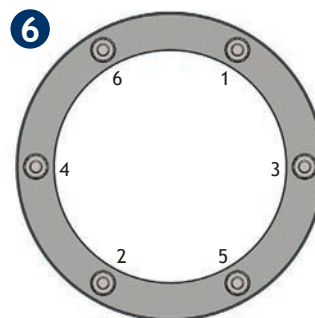
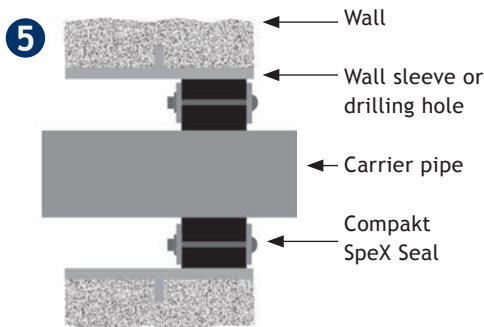


Important notes:

- Installation should only be carried out by qualified professionals.
- The Kompakt SpeX Seal is not an anchor point or pipe support. The seal can only assume a sealing function.
- The carrier pipes have to be centred and supported (fixed) directly at the pipe penetration.
- For long clamping strokes, deep hexagon sockets are additionally required for installation. In rare cases, allen screws must be used due to the design. In this case, a torque wrench with a hexagon socket is required for installation.
- Use only in suitable drill holes and casings with a suitable sealing surface in the inner wall and suitable rigidity (dimensional stability after installation).

Tools

Cleaning material/preparation, measuring tool, torque wrench, marking aid, extension tools, tubular box spanner or similar.



Screw connection		Wrench size		max. torque
Nuts	Allen screw	Nuts	Inner hexagon socket	
	M 5		4 mm	12 Nm
	M 6		5 mm	12 Nm
M 8		WS 13		15 Nm
M 10		WS 17 (WS 16)		15 Nm
M 12		WS 19 (WS 18)		15 Nm