

INSTALLATION INSTRUCTION

The PipeX FZH Wall Sleeve is suitable for wet installation and can be obtained in every desired length (up to a maximum of 1,200 mm). Subsequent treatment is not required. If changes of the PipeX FZH Wall Sleeve are carried out on site, the following instructions have to be followed:

- Only hand-operated or slow running equipment with a dust collector should be used.
- Dust mask to be worn.
- Fibre cement only to be cut wet.
- Please pay attention to the valid Federal Dangerous Substances Regulation.
- Only to be worked with in the open air or well-ventilated rooms.
- The fine dust is harmful to health when inhaled.

Insert the seal into the wall sleeve after the sleeve is casted into the concrete.

- Before installation visually inspect for damage.
- An impact of the concrete from high altitude or high pressure directly on the component is to be avoided when setting in concrete.
- When placing the sleeves in the formwork, ensure that there is sufficient concrete coverage (at least 100 mm around the OD sleeve, depending on static specifications, concrete quality and compaction).

When form working, the minimum distances according to construction statics must be observed.

Transport / Storage PipeX Casing aids:

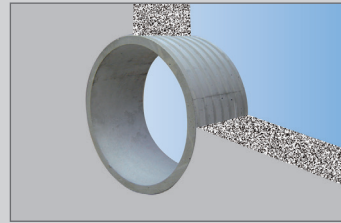
Protect against impact and shock. Storage and transport in original packaging.

Tools and Aids:

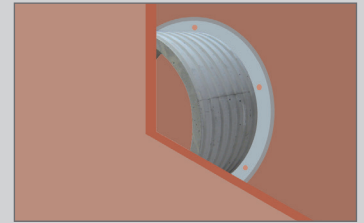
- PipeX Casing aids
- Hammer

Installation in formwork with PipeX Casing aids.

Fitting Instructions: PipeX FZH Wall Sleeve closed



Fitting flush with casing or with casing supports



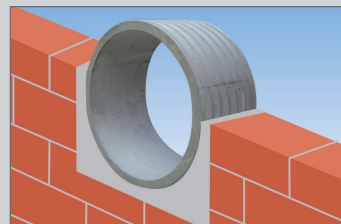
Fix wall sleeve in casing with casing supports



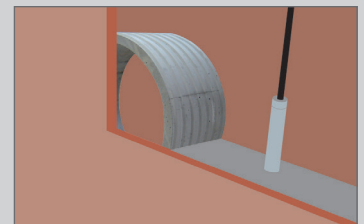
Fixing in steel casing welded with pipe clip (pipe clip on site)



Fitting in floor plate or ceiling



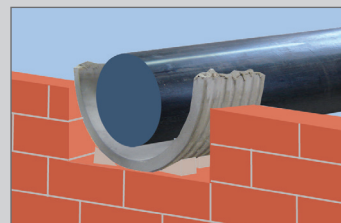
Fitting in brickwork



Thoroughly compress the concrete in the wall sleeve area

Fitting Instructions: PipeX FZH Wall Sleeve split

The processing instructions for the filler have to be followed



Align half casing to the carrier pipe



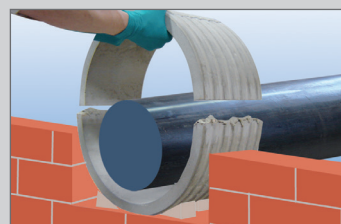
Fill in completely component B into filler (component A)



Mix well



Apply filler thickly to both half casings and press in spacer (distance to half casings 5 mm)



Connect half casings for fit until both halves rest on spacers



Distribute filler evenly so that the inner surface forms a homogeneous seal surface, smooth with emery cloth, if necessary