

EN

## INSTALLATION INSTRUCTION

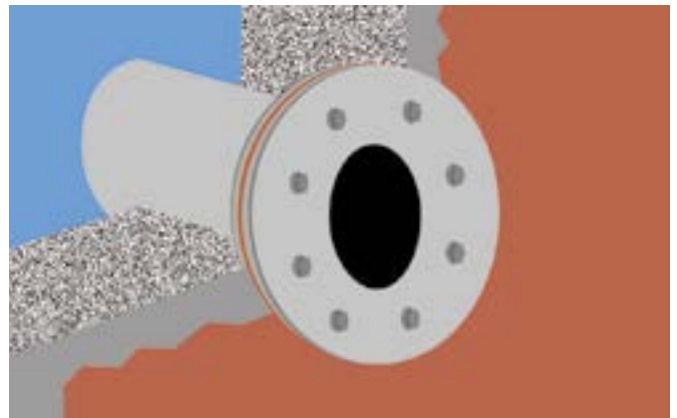
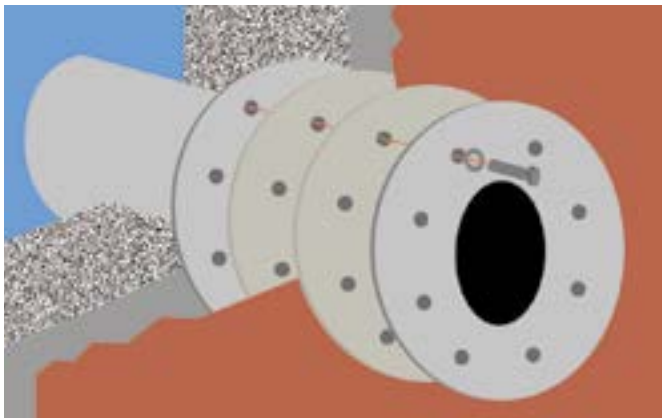


Fasten pipe clip to steel casing by means of welded joints  
(pipe clip on site).



Concrete must be well compacted near casing pipe.

### Fitting Instructions for Sealing Sheatings



#### For loose and bonded sealing sheetings

Lay sealing sheeting / mount loose flange

- Cut the sealing sheeting and install, if necessary, inserts made of the sealing sheeting material (in accordance with manufacturer's specification) on both sides of the sealing sheeting(s).  
Alternative: ready-made inserts\*
- Place the inserts and the sealing sheeting on the fixed flange construction.
- Fit the loose flange.  
**Warning: Mount the bevelled side facing the sealing sheeting.**
- Brace the sealing sheeting  
Tighten the nuts crosswise several times to brace the sealing sheeting. **Please bear in mind: torques according to sheeting manufacturer's specification or to DIN 18195 (see table).**

\* Please order inserts separately

EN

## INSTALLATION INSTRUCTION

**Warning:** Please observe the sheeting manufacture's standard torque values or DIN 18533 when tightening the nuts

Type of sealing coat	Torque* for M12 (Nm)	Torque* for M20 (Nm)
For KMB (polymer modified high build coatings)	30	100
Bare bitumen sheetings according to DIN 52129-R 500 N	12	50
PIB bonded with bitument	12	50
Bitumen sheetings and polymer bitumen sheetings according to DIN 18533-2:2015-12, table 1 with glass fabric lining material	15	65
Bitumen sheetings and polymer bitumen sheetings according to DIN 18533-2:2015-12, table 1 with polyester fleece or copper platelining material	20	80
500 N + 1 Cu	20	1. Tightening 100 2. und 3. Tightening 80
ECB sheetings, PVC-P sheetings, elastomer sheetings and EVA sheetings bonded with bitumen according to DIN 18533-2:2015-12, table 3	20	80
R 500 N + 2x Cu	30	1. Tightening 120 2. Tightening 100 3. Tightening 80
Plastic seals loosely laid according to DIN 18533-2:2015-12, table 3	30	100

\* torque in accordance with DIN 18533-1:2015-12, table A.2 for tripple tightening