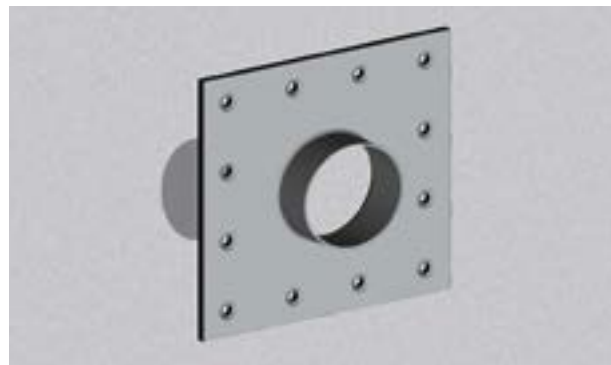


EN

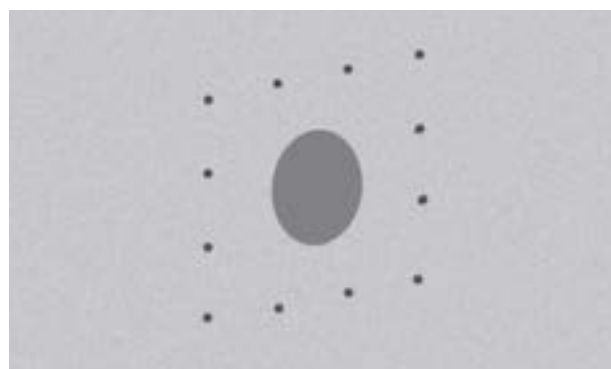
INSTALLATION INSTRUCTION

Closed version:

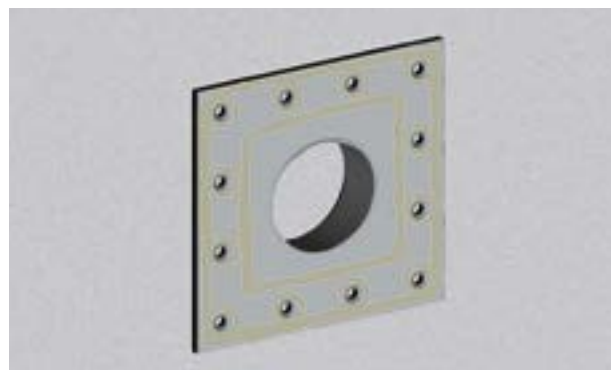
1. Press sleeve against the wall, adjust the sleeve on the borehole resp. wall penetration and mark drilling holes.



2. Remove sleeve from the wall and bore holes.



3. Apply included sealing compound on the backside of sleeve (in thick stripes \varnothing 6 mm – 10 mm), one stripe between the outside edge of flange and screwhole. An other one between welded sleeve and screwhole. Put last stripe around the screwhole.



4. Screw the sleeve on the wall (bolts and anchor for concrete wall are included). Spread discharged sealing compound.

5. After that you can assemble the wall penetration seal (see application manual of wall penetration seal).

