

GENERAL INFORMATION

An economic and secure method to seal hydrostatically

Asbestos-free fiber cement wall sleeves are - in connection with LINK-SEAL® or Kompakt seals - the right accessory whenever steel, cast iron, copper or plastic pipes pass through walls, ceiling or floors.

Material

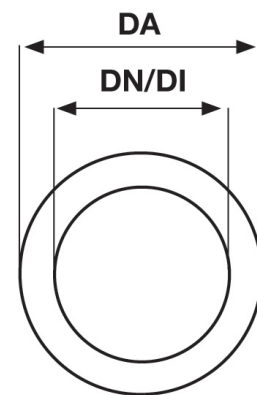
Asbestos-free fiber cement, consisting of cement and fiberglass, color light grey. Material class A1 according to DIN EN13501-1.

Specifications

Corrosion resistant, leak-proof against pressing water, electrically insulating, non-inflammable, high stability, good connection with concrete, can be coated, circumferential grooves, smooth inner walls, high dimensional stability, split version available for retrofitting, all lengths from ND 80-800 sizes up to max. 1.200 mm available.

The sleeve can either be set in concrete, walled in or be plastered into a wall penetration to be water-tight. The circumferential grooves on the outside provide a water tight and homogeneous bonding with the building. For usage in a concrete pool or container, the wall sleeve can be backed with a coating of the concrete construction. Function and compound of the wall sleeve with the concrete is certified by the MFPA-Leipzig up to 5 bar.

In connection with our original LINK-SEAL® or Kompakt seals, an absolutely pressure and water tight sealing of the annular space between fiber cement wall sleeve and pipe will be achieved.



Technical Data

Dimensions								
Size	Inner diameter (ID in mm)		Outer diameter (OD in mm)		Excentrity Core max	Length	Form Grooves	Cut Offset
	Nominal size	Tolerance	Nominal size	Tolerance				
ND 80	80	+2/-1	120	+5/5	1,5	+/-3	A	0
ND 100	100	+2/-1	140	+5/5	1,5	+/-3	A	0
ND 125	125	+2/-1	165	+5/5	1,5	+/-3	B	0
ND 150	150	+2/-1	190	+5/5	1,5	+/-3	B	0
ND 200	201	+2/-1	250	+5/5	1,5	+/-3	B	0
ND 250	250	+2/-1	300	+5/5	1,5	+/-3	B	0
ND 300	300	+2/-1	350	+5/5	1,5	+/-3	B	0
ND 350	350	+2/-1	400	+5/5	1,5	+/-3	B	2
ND 400	400	+2/-1	460	+5/5	1,5	+/-3	B	2
ND 450	450	+2/-1	510	+5/5	1,5	+/-3	B	2
ND 500	500	+2/-1	570	+5/5	1,5	+/-3	B	2
ND 600	600	+3/-2	670	+5/5	1,5	+/-3	B	2
ND 700	700	+3/-2	780	+5/5	1,5	+/-3	B	3
ND 800	800	+3/-2	880	+5/5	1,5	+/-3	B	3

Subject to technical changes, further sizes upon request.

Order description

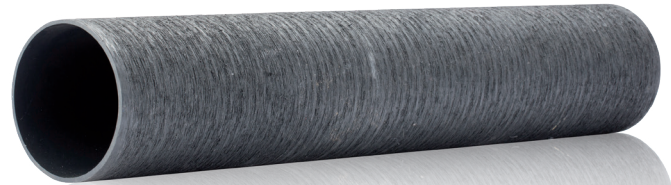
Fiber-cement wall sleeve, ND size, length.



Version: closed/split. For split version additional putty is necessary. Available as a set with spacer, container at 1 kg.

Consumption about 125 g. per 100 mm sleeve length.

TECHNICAL DATA


PVC wall sleeve suitable for concreting or bricking in. They are supplied in standard lengths of 400 mm and can be easily trimmed to the wall thickness on site.



Descriptions	Inner diameter in mm	Outer diameter in mm	Length* in mm
Wall sleeve PVC 	50	54	400
	60	65	400
	70	75	400
	80	85	400
	90	95	400
	100	106	400
	125	131	400
	150	160	400
	200	210	400
Reinforced wall thickness	82	90	400
	100	110	400
	250	280	400
 Wall sleeve with shaped socket and lip seal	Inner diameter in mm	Inner diameter socket in mm	Length in mm
	100	110	500
	100	110	800
	100	110	1000
	100	110	110
	150	160	110
	100	110	250
	125	131	250
	150	160	250
	100	110	300
	125	131	300
	150	160	300

*Other lengths upon request

Accessories

Casing aids made of PE-LD 	Ø Inner diameter PVC wall sleeve in mm
	60
	80
	100
	125
	150
	200
	250

Further sizes upon request

TECHNICAL DATA

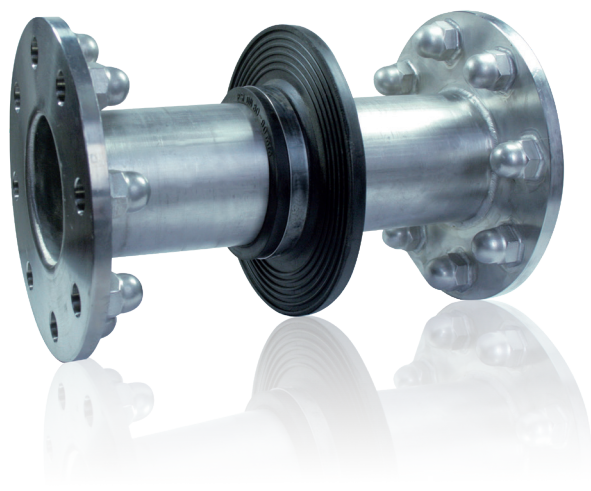
The stainless steel wall penetration PipeX FF is cast in the concrete wall. It provides a seal against a range of media. The carrier pipes are flanged directly to the cast-in penetration. The PipeX FF assembly is carried out flush with the casing for a variety of applications such as sedimentation tanks, high-level tanks, shaft constructions etc. The flanges can be manufactured as welding neck flanges according to DIN 2632 (PN10) or smooth flanges (turned on all sides with reduced sheet thickness) similar to DIN 2576 (PN10). Other pressure stages available upon request. All connecting flanges have cap nuts welded tightly on the back.

The stainless steel pipes used correspond to the ISO pipe range 1. The PipeX FF is supplied with wall flange welded on the middle, an annular water stop plate that guarantees safe sealing of the sleeve outer diameter and also serves as a wall anchor. Integra Pipe is manufactured in S304 (V2A) (1.4301 or 1.4541) or S316 (V4A) (1.4571), other materials upon request. It is welded in inert gas and stained and passivated afterwards. On request PipeX FF can be supplied sanded, without wall flange or with only one flange sheet (F-piece).

Dimension ND	Pipe dimensions in mm Outer diameter x S	wall thickness* mm	Flange thickness in mm Welding neck flange DIN 2632 PN10	Flange thickness in mm Smooth flange similar to DIN 2576 PN10
50	60.3 x 2.0	300	18	10
65	76.1 x 2.0	300	18	10
80	88.9 x 2.0	300	20	10
100	114.3 x 2.0	300	20	10
125	139.7 x 2.6	300	22	10
150	168.3 x 2.6	300	22	12
200	219.1 x 3.0	300	24	12
250	273.0 x 3.0	300	26	15
300	323.9 x 3.0	300	26	15
350	355.6 x 4.0	300	26	15
400	406.4 x 4.0	300	26	15
500	508.0 x 4.0	300	28	15

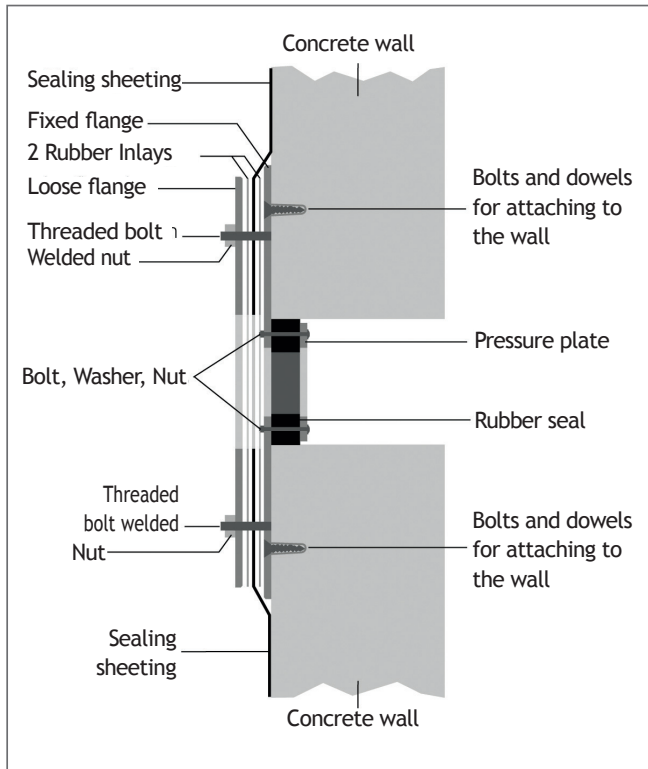
*Also available for other wall thicknesses and diameters

PipeX FF 4.0 with rubber wallcollar is max. 5 bar pressure-tight, with a pipe diameter from OD 32 to 315 mm.
From a pipe diameter of OD 355 mm pressure-tight to 4 bar.

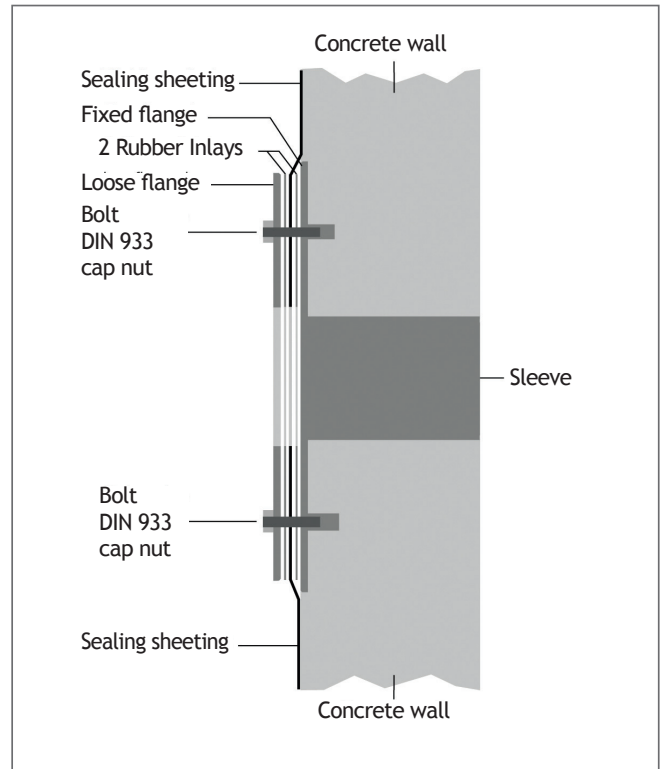


SECTIONAL VIEW

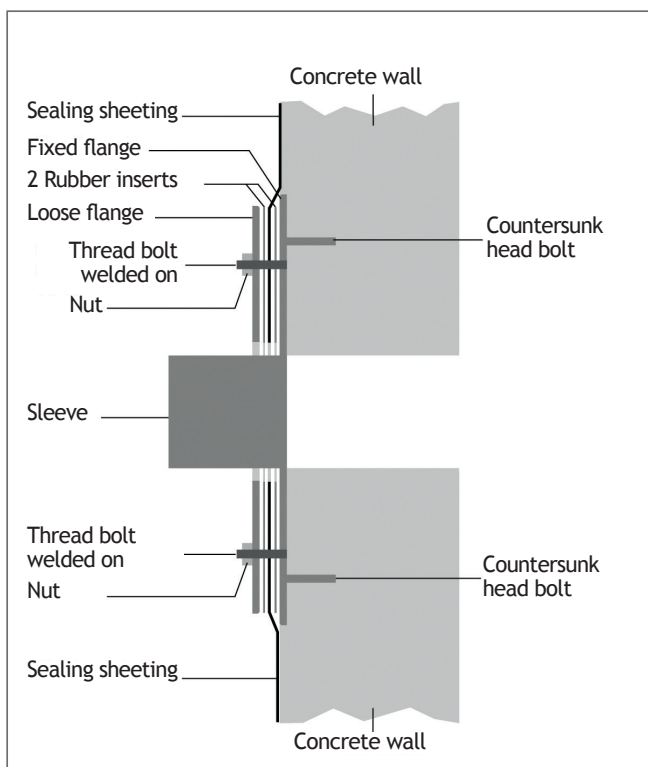
Seal with fixed/loose flange according to DIN 18533
galvanized steel parts or stainless steel



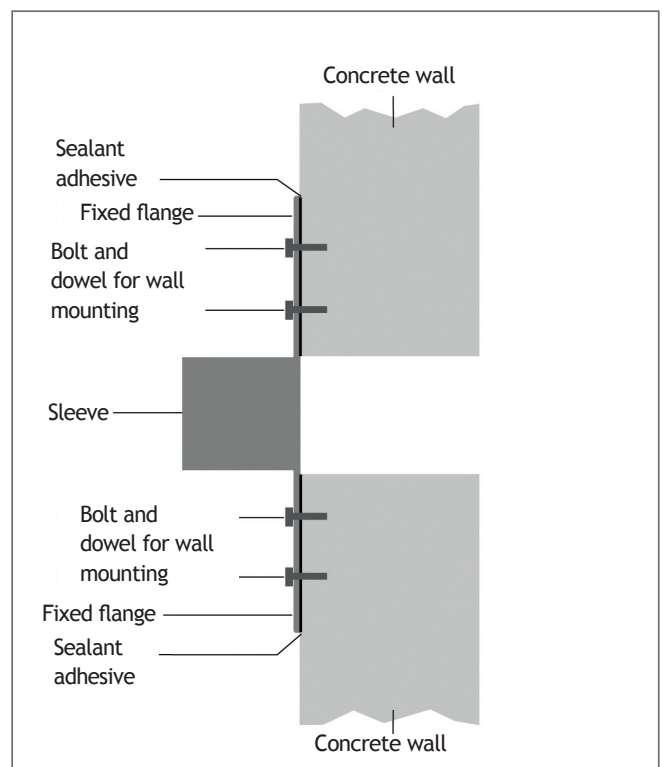
Wall sleeve with fixed/loose flange according to DIN 18533
galvanized steel parts or stainless steel



On wall-face sleeve with fixed/loose flange according to
DIN 18533 galvanized alternatively stainless steel

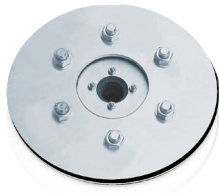


On wall-face sleeve in closed and split version, galvanized
or alternatively stainless steel



TECHNICAL DATA

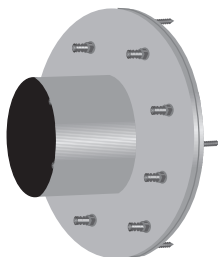
Seals with fixed/loose flange
according to DIN 18533 for constructions with sealing
sheeting. Order appropriate inlays (elastomer inlay)
between the flanges if required.



Seals with fixed/loose flange
according to DIN 18533 for constructions with sealing
sheeting. Order appropriate inlays (elastomer inlay)
between the flanges if required.



On wall-face sleeve with fixed/loose flange
according to DIN 18533 for constructions with sealing
sheeting. Order appropriate inlays (elastomer inlay)
between the flanges if required.



Seal with fixed/loose flange

galvanized against non-pressing water, alternat. stainless steel S304 (V2A)

OD of pipe in mm	Core drilled hole or wall sleeve	OD fixed flange
20-40	80	224
15-65	100	244
55-78	125	269
46-110	150	294
88-144	200	344
135-187	250	396
178-226	300	446
224-282	350	496
270-330	400	548
300-400	500	648
400-500	600	748
500-600	700	848
600-700	800	948
700-800	900	1050
800-900	1000	1150

Seal with fixed/loose flange

galvanized against pressing water, alternatively stainless steel S304 (V2A)

OD of pipe in mm	Core drilled hole or wall sleeve	OD fixed flange
20-40	80	404
15-65	100	424
55-78	125	449
46-110	150	474
88-144	200	524
135-187	250	576
178-226	300	626
224-282	350	676
270-330	400	728
300-400	500	828
400-500	600	928
500-600	700	1028
600-700	800	1128
700-800	900	1230
800-900	1000	1330

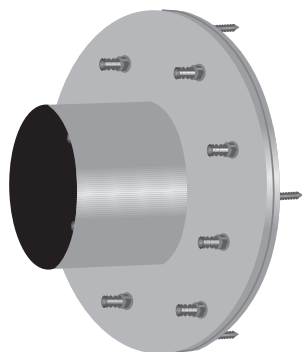
On wall-face sleeve with fixed/loose flange

galvanized against non-pressing water

OD of pipe in mm	ID sleeve	OD fixed flange	Standard lengths of wall sleeves
20-40	80	224	100 mm*
15-65	100	244	
55-78	125	269	
46-110	150	294	
88-160	200	344	
135-210	250	396	
178-226	300	446	
224-282	350	496	
270-330	400	548	
300-400	500	648	
400-500	600	748	
500-600	700	848	
600-700	800	948	
700-800	900	1050	
800-900	1000	1150	

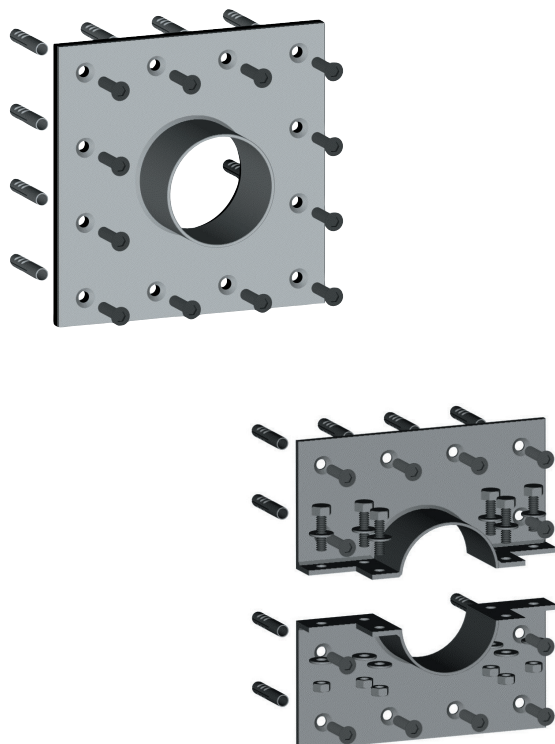
* For other sealings consider the required sleeve length, including the the installation depth of the sealing.

TECHNICAL DATA



On wall-face sleeve with fixed/loose flange
galvanized against pressing water

OD of pipe in mm	ID sleeve	OD fixed flange	Standard lengths of wall sleeves
20-40	80	404	100 mm*
15-65	100	424	
55-78	125	449	
46-110	150	474	
88-160	200	524	
135-210	250	576	
178-226	300	626	
224-282	350	676	
270-330	400	728	
300-400	500	828	
400-500	600	928	
500-600	700	1028	
600-700	800	1128	
700-800	900	1230	
800-900	1000	1330	



On wall-face sleeves

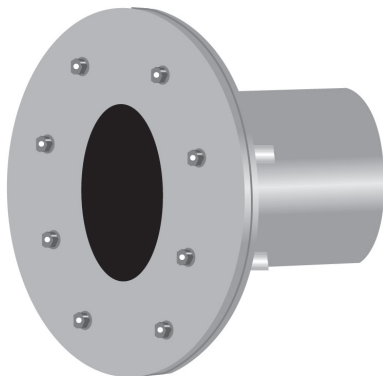
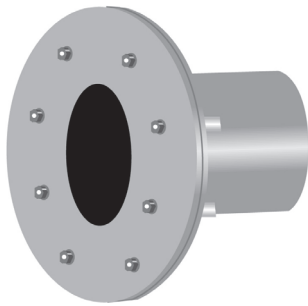
galvanized in closed and split version, alternatively stainless steel S304 (V2A). For installation in front of wall or beneath a ceiling including sealing compound and fastening material.

OD of pipe in mm	ID sleeve	Edge length of fixed flange	Length of Wall sleeve
20-40	80	280	60 mm*
15-65	100	300	
55-78	125	325	
46-110	150	350	
88-160	200	400	
135-210	250	450	
178-226	300	500	
224-282	350	550	
270-330	400	600	
300-400	500	700	
400-500	600	800	
500-600	700	900	
600-700	800	1000	100 mm*
700-800	900	1100	
800-900	1000	1200	

* For other sealings consider the required sleeve length, including the the installation depth of the sealing.

TECHNICAL DATA

Wall sleeve with fixed/loose flange
according to DIN 18533 for constructions with sealing
sheeting. Order appropriate inlays* (elastomer inlay) bet-
ween the flanges if required.



Other sizes and versions in stainless steel S304 (V2A) or alternatively
S316 (V4A) upon request.

*PSI inlays are elastomer gaskets which are inserted between fixed and
loose flanges. With sealing sheeting made of very thin or very hard ma-
terial, the seal with a steel surface is inadequate. This means that an
elastomer gasket is required here. The following sealing sheeting mate-
rials require an inlay according to the standard: ECB, PIB, PVC-P, EPDM,
EVA. We recommend inserting inlays also for sealing sheeting made of
PE, PE-HD and PVC.

Different versions of mounting the wall sleeves with fixed/loose flange:

- Anchoring using concrete anchors or cap nuts to embed in concrete
- Anchoring using dowels for subsequent installation in a core drilled hole

Please specify accordingly when making an inquiry or placing an order.

Wall sleeves with fixed/loose flange
galvanized against non-pressing water, alternatively stainless steel S304 (V2A)

Outer diameter of pipe in mm	Inner diameter sleeve	Outer diameter fixed flange	Standard lengths of wall sleeves
20-40	80	224	200 250 300 350 400 500
15-65	100	244	
55-78	125	269	
46-110	150	294	
88-160	200	344	
135-210	250	396	
178-226	300	446	
224-282	350	496	
270-330	400	548	
300-400	500	648	
400-500	600	748	
500-600	700	848	
600-700	800	948	
700-800	900	1050	
800-900	1000	1150	

Wall sleeves with fixed/loose flange
galvanized against pressing water, alternatively stainless steel S304 (V2A)

Outer diameter pipe in mm	Inner diameter sleeve	Outer diameter fixed flange	Standard lengths of wall sleeves
20-40	80	404	200 250 300 350 400 500
15-65	100	424	
55-78	125	449	
46-110	150	474	
88-160	200	524	
135-210	250	576	
178-226	300	626	
224-282	350	676	
270-330	400	728	
300-400	500	828	
400-500	600	928	
500-600	700	1028	
600-700	800	1128	
700-800	900	1230	
800-900	1000	1330	