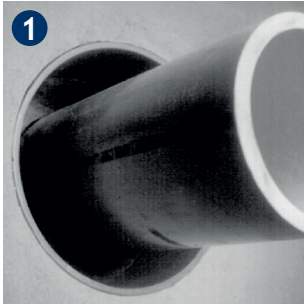


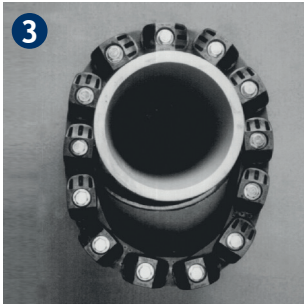
EN
INSTALLATION INSTRUCTION



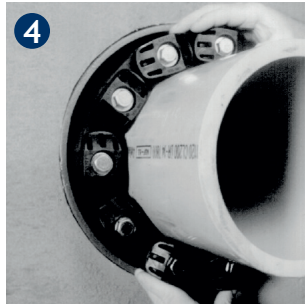
1 Center the pipe, cable or conduit in wall opening or casing. Carrier pipes must be suitable, dimensionally stable and without damage in the sealing area. Make sure the pipe is adequately supported on both ends. The LINK-SEAL® can only perform a sealing function and does not serve as a pipe support or fixed point. All building and pipeline guidelines are to be observed.



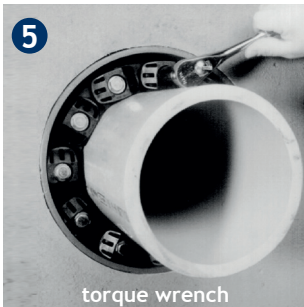
2 Use only in suitable wall sleeves, installation tolerances according to dimensions in the calculation program. The specified clamping ranges must be observed here. This also applies to the dimensions of the carrier pipes. With suitable sealing surface in the inner wall and suitable rigidity (dimensional stability after installation) of the wall sleeve. Loosen rear pressure plate with nut just enough so links move freely towards and away from each other connect both ends of belt.



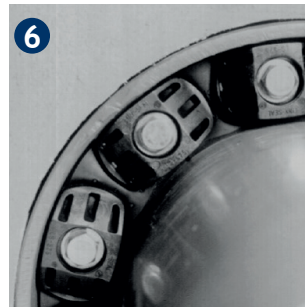
3 Check to be sure bolt heads are facing the installer. Extra slack or sag is normal. Do not remove links if extra slack exists. Note: On smaller diameter pipes, links may need to be stretched.



4 Slide belt assembly into annular space. For larger size belts, start inserting LINK-SEAL® modular seal assembly at the 6 o'clock position and work both sides up toward the 12 o'clock position in the annular space.



5 Start at 12 o'clock. Tighten any bolt in a clockwise manner. Tighten only by hand! (torque wrench)



6 Do not tighten any bolt more than 4 turns at a time. Continue in a clockwise manner. Make 2 or 3 more passes at 3 turns per bolt until links have been uniformly compressed and the max. torque moment (see table) is reached.

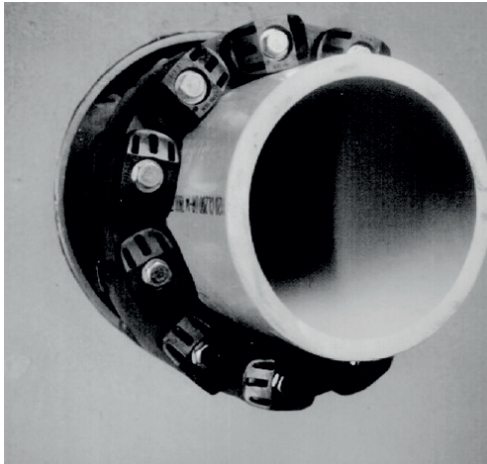


7 Repeat tightening after approx. 2 hours. Especially for LINK-SEAL® Type LS 500 up to LS 700 it might be necessary (depending on the installation conditions such as annular space, temperature, etc.) to tighten again for several times.

Recommendation: To create a suitable sealing surface, we recommend coating the core holes with PSI KB epoxy resin. This serves to protect the concrete and to smooth out any shrinkage holes/scoring.
FHRK Standard
 LS 200 to LS 275 FHRK Standard 20, 30, 40
 LS 300 to LS 700 FHRK Standard 20, 30, 40, 60

Max. torque moment			Type
for Types C, S316 rubber black O and OS316 rubber green Trubber grey Shore 50° 5°	for Type BC and BS316 rubber blue, Shore 40° 5°	for Type LS version KTW/ W270 Shore 50° 5°	
2 Nm	2 Nm	2 Nm	LS 200 up to LS 275
8 Nm	6 Nm	8 Nm	LS 300 up to LS 360
27 Nm	20 Nm	27 Nm	LS 400 up to LS 475
65 Nm	50 Nm	65 Nm	LS 500 up to LS 575
110 Nm	65 Nm	-	LS 615
65 Nm	50 Nm	65 Nm	LS 625 up to LS 700

EN
INSTALLATION INSTRUCTION



Make sure to have the right equipment when installing LINK-SEAL®

Tools

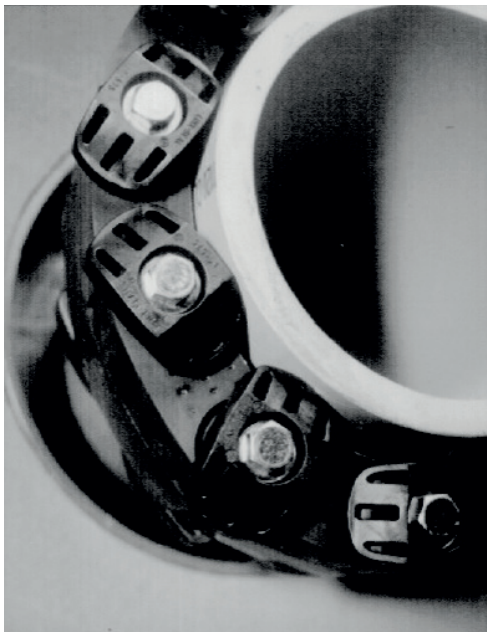
Cleaning material/ preparation, measuring tool, torque wrench, marking aid.

Do's

1. Make sure pipe is centered.
2. Install belt with the pressure plates evenly spaced.
3. Install the exact number of links indicated in sizing charts.
4. Check to make sure pipe is supported properly during backfill operations.
5. Make sure seal assembly and pipe surfaces are free from dirt.

Don'ts

1. Don't install the belt with the pressure plates aimed in irregular directions (staggered)
2. Don't install LINK-SEAL® Modular seals with spiral weld pipe.
3. Don't torque each bolt completely before moving on to the next.
4. Do not use high speed power tools.
5. Please note that the LINK-SEAL® isn't a fixing point.



PSI warranty is limited to the replacement of faulty material. The user himself is responsible to check if the products he is using are suitable for his application.