



WalloX WALL COLLAR / WALL SEALING RING



Civil engineering



Water



Energy



Oil



Gas



District Heating



TYPE SELECTION



WalloX **Wall Collar round** - Pipe/Cable
WalloX **Wall Collar flat** - Flat conductor

Fields of application

Wherever pipes are worked directly into concrete, the wall collar is used as a safe hydrostatic seal

Material

High quality rubber; stainless steel straps

Properties

Tensile strength 9.5 N/mm²; elongation at break 500%; Shore hardness A 45° ±5; service temperature max. 80 °C; minimum temperature -40 °C; Pressure-tight for pipe AD 32 to OD 315 tested up to 5 bar; Pressure-tight from pipe OD 355 tested up to 4 bar

Sizes

Pipe outside diameter ND 10 to 1400



WalloX **Wall Sealing Ring Temp** - Pre-Insulated Pipes

Fields of application

For pre-insulated pipes, particularly PE-jacket and flexible pipes for district heating systems

Material

High quality rubber

Properties

Against non-pressing water up to 0.5 bar water pressure

Sizes

Pipe outer diameter ND 65 - 1000 mm



AVAILABLE ONLINE | WWW.PSI-PRODUCTS.COM



Product data sheet



Installation



Tender text



Type selection



Certificates



PRODUCT INFORMATION

Properties

- Ground water and pressing water tight
- High quality coutchouc
- Fast and easy installation

Fields of application

- Pipe penetration e.g. of pipes made of steel, cast iron, copper, plastic, fiber cement, concrete, and vitrified clay
- Pressing through walls, ceilings, floors, manholes, swimming pools and groundwater tanks
- Design for flat conductors, wires and cables for lightning protection

Description WalloX Wall Collar

Cleaning the pipe surface. Slide on the wall collar and place it in the designated position. For wall collars up to pipe OD 315 mm. Two fastening straps, placement on both sides of the flange. For wall collars from pipe OD 355 mm. Three fastening straps, placement on both sides of the flanges, as well as between the flanges.

Description WalloX Wall Sealing Ring Temp

Manufactured and produced in one piece up to Sizes D 200. Due to their conical shape, the rings fit tightly on to the pipe, eliminating any need for additional fastening straps. Wall sealing rings Temp are pushed on to the pipe and cast in the center of the wall.

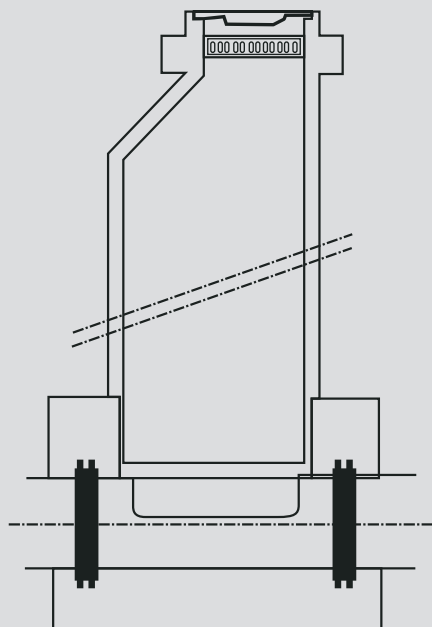
Notes

- The wall collar is not a fixing point or bearing and therefore cannot absorb any mechanical forces
- The minimum cover of concrete should not be less than 3 cm
- WalloX Sealing Ring Temp are tested and certified by MFPA Leipzig up to 0.5 bar water pressure. If water pressure of more than 0.1 bar is expected, we recommend using Kompakt Temp sealing ring against pressing water for wall penetrations designed for district heating pipes.

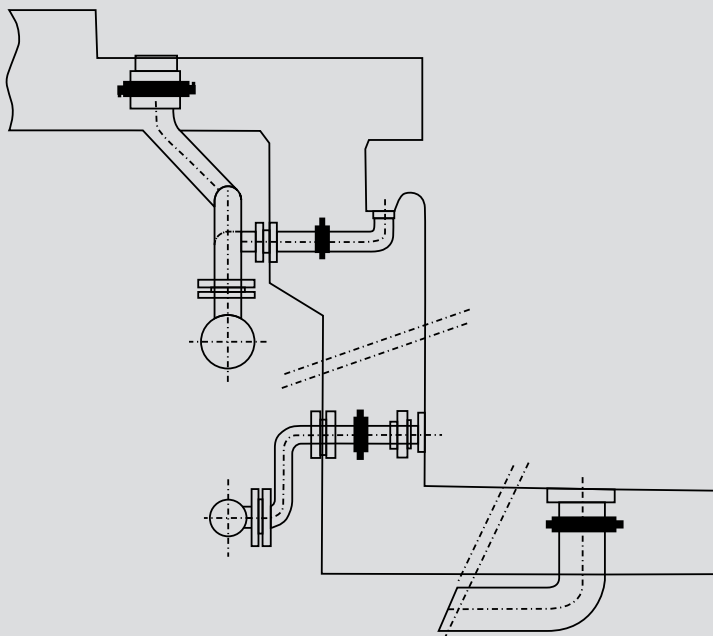


TECHNICAL INFORMATION

Application examples WalloX Wall Collar



Swimming pool



Manhole opening

Lightning rod

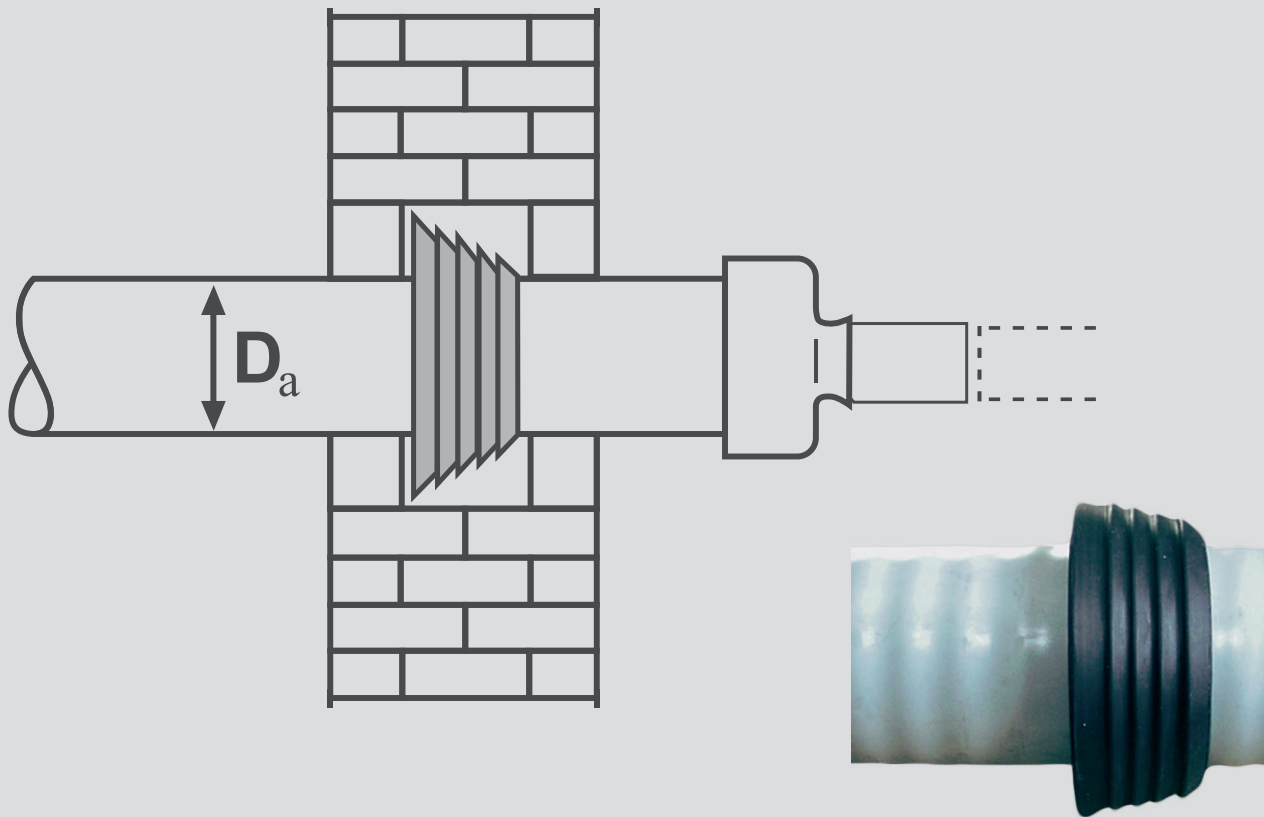
Flat conductor 30 x 3.5 or 3 mm



Round conductor; 8 - 10 mm



Application example WalloX Wall Sealing Ring



CERTIFICATES

To offer our customers the best possible quality and service, we are organized according to DIN EN ISO 9001:2015 and have this continuously checked and certified.

CERTIFICATE ISO 9001:2015

This certification documents our conformity of the quality management system

AEO-CERTIFICATE

Authorized Economic Operator "AEOC (customs simplification)

WalloX Wall Collar / Wall Sealing Ring



- MFPA Leipzig; pressure-tight when installed: WalloX Wall Collar
- MFPA Leipzig; pressure tightness in the installed condition against non-pressing water: WalloX Wall Sealing Ring
- WalloX Wall Collar radon tight: Audit report Dr. Joachim Kemski

