

EN INSTALLATION INSTRUCTION

Sleeve tube:



1 Pull sleeve over the carrier pipe and the casing pipe. The edge of the casing pipe should be chamfered.



2 Install the first strap about 15 mm in front of the end of the casing pipe.

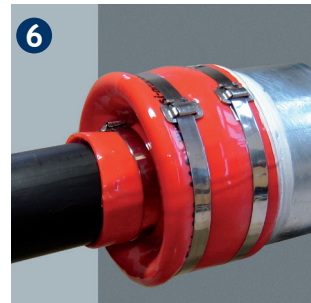
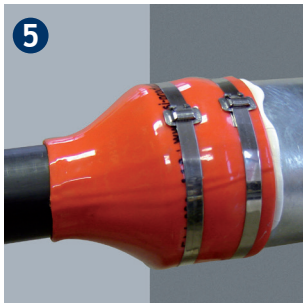


3 Inject the adhesive included in the delivery all round underneath the sleeve.

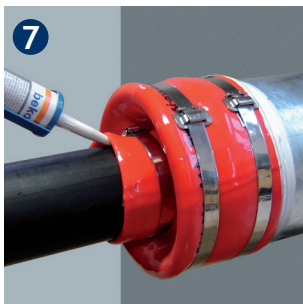


4 Then install the second strap. Spread leaking adhesive, if necessary.

Carrier pipe:



5 Align the sleeve on the carrier pipe elongated (figure a) or S-shaped (figure b) depending on the extension direction. Then install the first strap about 15 mm away from the rear end.



7 Inject the adhesive underneath the sleeve the way you did with the casing pipe side and install the second strap. Spread leaking adhesive, if necessary.



8 Finally, the sleeve has to be protected by means of an expansion pad.