



## INSTALLATION INSTRUCTION



1

The hole has to be drilled according to the tolerance  $\pm 2$

2

Press seal in the hole without lubricant. Make sure that the seal is fully pushed in.

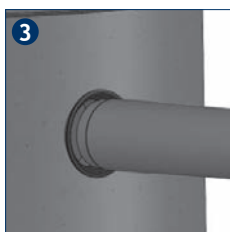
3

The end of the pipe should be lubricated. Push pipe into the seal. Make sure that pipe is pushed in at least 50 mm.



2

SealiT Manhole Connection Seals are used for flexible connection between pipes and manholes. Storage in a dry place at a temperature above 0°C.



3