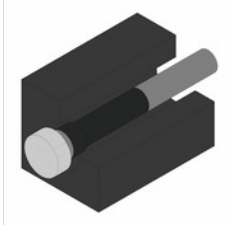




INSTALLATION



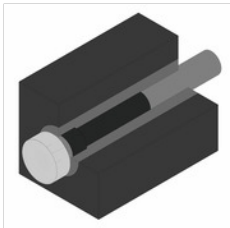
1
Set pipe with special coating in concrete

2
remove the sealing caps

3
guide the cable from the inside or outside through the single-gang house entry until the desired cable protrusion in the building is reached

4
slide the rubber seal onto the cable

5
screw the screw attachment hand-tight onto the conduit



WARNING

Drill holes individually customer request possibl

NOTE

Tube with special coating;
large sealing cap and small sealing cap; rubber seal; support rubber; screw cap